

Bid on this year's
CUSTOM, STUDENT-BUILT HOUSE!

Since 1971, students & faculty in the building trades programs at North Platte Community College have built a top-quality, three-bedroom house as part of the "hands-on" aspect of their training.

- Built to be Moved to Buyer's Location
- Buyer Responsible for Financing Prior to Sale
- Built to FHA & VA Specifications
- Buyer Responsible for Moving House



Composite photo of actual house. Lot & landscaping not included.

Open House
Schedule
5 - 7 PM

Thursday	June 6
Tuesday	June 18
Thursday	June 20
Tuesday	June 25
Wednesday	June 26



**NORTH PLATTE COMMUNITY COLLEGE
FOUNDATION**

Auction House
— 2019 —

You dream of owning a new home. Our students dream of building it.

To Place A Bid:

OKSANA EMPFIELD
308-535-3672
empfieldo@mpcc.edu

To Schedule a Tour:

BONNIE KRUSE
308-535-3754
~ or ~
JO ANN LUNDGREEN
308-535-3796

For House-specific
Information:

ROGER FATTIG
308-535-3646
fattigr@mpcc.edu

**MUST BE OFF LOCATION BY
5:00 PM CDT, MONDAY, SEPTEMBER 16, 2019.**

The college is not responsible for damage due to transportation,
final placement, or foundation settlement.

For more information about our graduation rates, the median debt of students who have completed the program, and other important information, please visit our website at
<http://www.mpcc.edu/financial-services/GainfulEmployment/GedBCTechCertificate.aspx>
<http://www.mpcc.edu/financial-services/GainfulEmployment/GedBCTechDiploma.aspx>

BEAUTIFUL CUSTOM BUILT HOME

Built by the NPCC

Building Trades Department:

- Building Construction
- Electrical
- Heating, Ventilation and Air Conditioning

Proceeds support Building Trades
scholarships and programming

Bid Requirements & Deadline

BIDDING STARTS

June 6, 2019 | 5 PM

Minimum bid of \$145,000

ALL BIDS MUST BE RECEIVED BY
2:00PM CDT on Thursday, June 27, 2019
no online bids accepted past noon
highest bidder is awarded the house

How to Bid

- 1 Go to www.mpcc.edu
for official form or
contact the welcome center
- 2 Submit official form to
NPCC Welcome Center

Welcome Center is located at:
North Platte Community College
South Campus
601 W State Farm Rd.
North Platte, NE 69101

**Highest Bid will be posted
online at**
www.mpcc.edu
throughout the bidding period

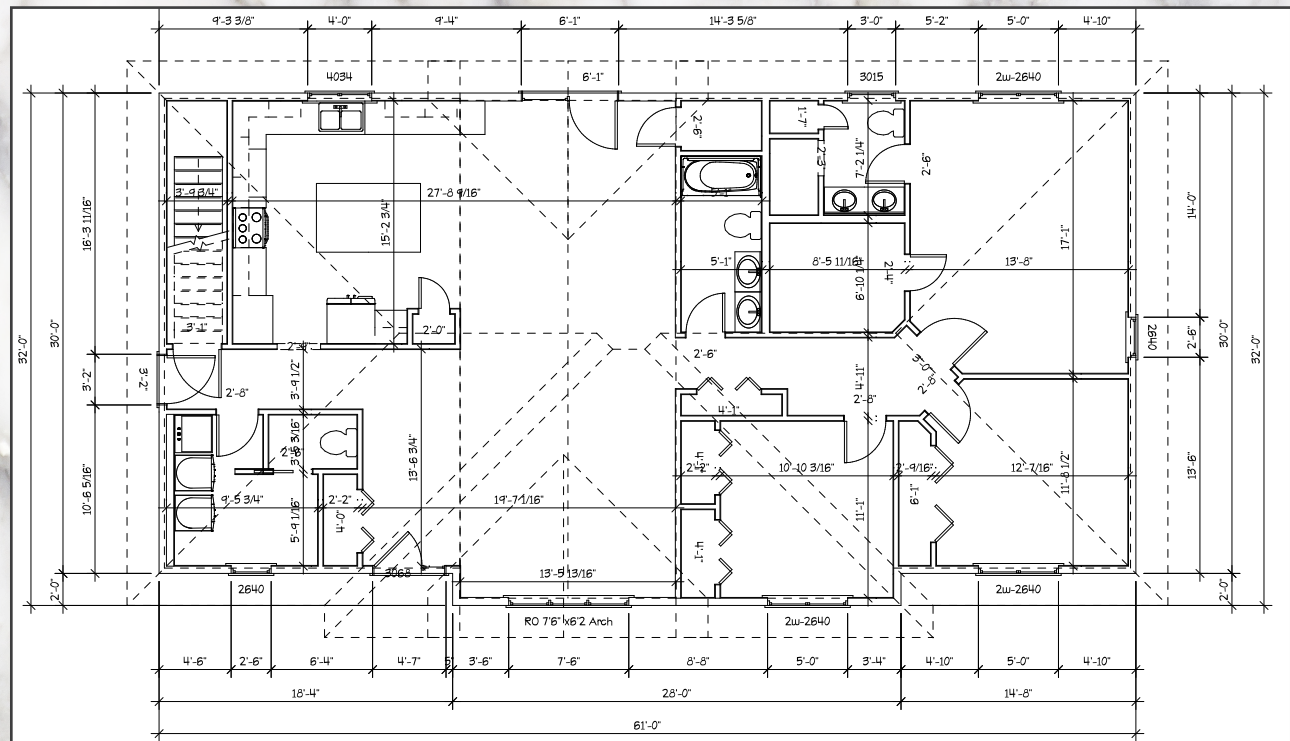
Mid-Plains Community College will serve as the escrow agent.
The successful bidder must deliver
a \$10,000 deposit (cash or certified check) to:

Welcome Center
C/O North Platte Community College - South Campus
601 W. State Farm Rd., North Platte, NE 69101
no later than 2:00 pm CDT, Friday, June 27, 2019.

Balance payable upon mutually agreeable closing date,
prior to 2:00 pm CDT, September 16, 2019.

Once buyer takes possession they are responsible for insurance
All fees related to the sale are the responsibility of the Purchaser.
Successful bidder agrees to have house removed
by 5:00 pm CDT, Monday, September 16, 2019.
Successful bidder is responsible for house removal.
House remains MPCC property until closing is final.

NORTH PLATTE COMMUNITY COLLEGE 2019 HOUSE FLOOR PLAN



Features

- Built from the foundation up, to conform to High Performance House Standards
- 1,886 square feet
- 3 Bedroom/2.5 Bath
- Open concept from foyer to living to dining to kitchen
- Pella Designer Series windows with exceptional energy efficiency
- LP SmartSide siding with 30 year finish warranty. Resistant to rot, termites, and mold
- Versetta Stone Accent on front
- Rolex aluminum soffit and fascia
- Solid hardwood ¾" flooring throughout kitchen, living, dining & hallways
- Cathedral ceiling in living, dining room
- Pella entrance and side light with Artesian pattern decorative glass
- Arch windows above front triple casement window and rear French door
- Raised-panel, midnight stained maple cabinets.

Convenience built in through thoughtful design

- Granite countertops
- Two pantries
- Large island with snack area
- Outside-vented range hood
- Dishwasher included
- Arched panel mocha stained interior doors
- Carpeted bedrooms
- Large walk-in closet in master bedroom
- Spacious master shower with full ceramic tile enclosure
- Mudroom with laundry space & powder room next to optional garage
- Energy saving LED lighting throughout
- Stained oak base and trim
- 30 year warranty shingles
- R46 or R38 insulation in ceilings
- R21 insulation in 6" sidewalls
- Wired for cable or telephone
- Buyer is responsible for electrical meter, main service disconnect, water heater, furnace, and HRV/ERV*

* 2012 International Residential Code Section N1102.4.1.3 requires that new construction in Zone 5 has an infiltration rate of less than 3 turnovers/hour. This house is built to those standards. Section R303.4 requires whole-house mechanical ventilation with a rating of less than 5 turnovers/hour. Please speak with your HVAC professional for further clarification.

These codes assure that in a very tightly constructed house, such as this, there will be plenty of fresh air without losing heat, and without humidity buildup.