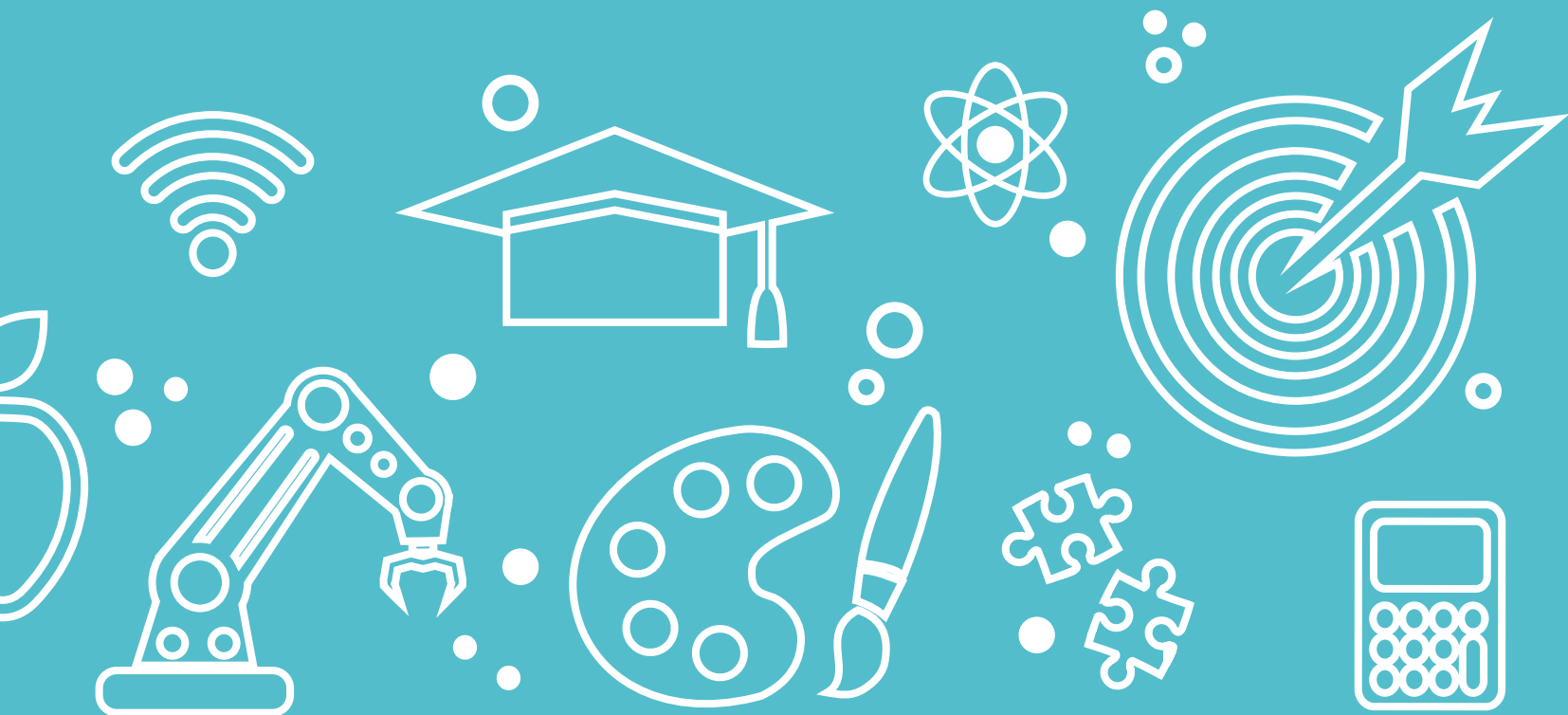


EARLY ENTRY

PARENT HANDBOOK



WHAT IS EARLY ENTRY?

Early entry courses, often referred to as "concurrent enrollment" or "dual credit", provide opportunities for high school students to take college-level courses. Students can earn credits toward both a high school diploma and a college degree.



BENEFITS OF EARLY ENTRY



Jump start
your goals!



Save money!



Earn transfer
credits!

12 Credits =
MPCC Scholarship
Opportunity



Prepare for
college while
in a supportive
environment.



NACEP ACCREDITED

The National Alliance of Concurrent Enrollment Partnerships (NACEP) ensures that college courses offered by high school teachers are as rigorous as courses offered on the college campus.

DUAL CREDIT COURSE OPTIONS

3 OPTIONS FOR ENROLLMENT

ONLINE, ON CAMPUS, OR AT THE HIGH SCHOOL

AVAILABILITY OF DUAL CREDIT CLASSES

SPRING



SUMMER



FALL



CORE FOUR COURSES

All students pursuing a two or four-year degree at a college or university will require courses in these four areas:

- **Math**
Course Options: College Algebra or Statistics
- **English**
Course Options: English Composition
- **Science With Lab**
Course Options: Biology, Chemistry or Physics
- **Social Sciences & Humanities**
Course Options: Sociology, Psychology or Speech



MOST RECOMMENDED COURSES

- ENGL 1010 English Composition I ★
- ENGL 1020 English Composition II ★
- MATH 1150 College Algebra ★
- MATH 1250 Trigonometry ★
- MUSC 1010 Music Appreciation
- PSYC 1810 Intro to Psychology
- SOCI 1010 Intro to Sociology

- BIOS 1010 General Biology
- CHEM 1090 General Chemistry
- SPCH 1110 Public Speaking
- HIST 2010 American History I to 1877
and/or
HIST 2020 American History II Since 1877
- POLS 1000 American Government

Students must have specific ACT, SAT, or MAP scores to qualify for English and Math courses.
If scores do not qualify, the student should contact earlyentry@mpcc.edu.

CLASSES THAT REQUIRE SCORES ★

8AM COURSES AVAILABLE

Courses are offered on campus to provide high school students face-to-face instruction. Talk to your high school counselor about course availability.

FALL: AUGUST-DECEMBER

ACCT 1200	Accounting I	8:00 - 8:30 AM	Mon. Wed. & Fri.	3.0 Credit Hours
BIOS 1010 & 1011	General Biology	8:30 - 9:45 AM	Mon. & Wed.	4.0 Credit Hours
BSAD 1050	Intro to Business	8:00 - 8:50 AM	Tues. Thur. Hybrid	3.0 Credit Hours
CHEM 1090 & 1091	Gen. Chemistry I	8:00 - 8:50 AM	Mon. & Fri.	4.0 Credit Hours
ENGL 1010	English Comp. I	8:00 - 8:50 AM	Mon. Wed. & Fri.	3.0 Credit Hours
MATH 1250	Trigonometry	8:00 - 9:15 AM	Mon. Fri. Hybrid	3.0 Credit Hours
MATH 1600	Analytic Geom. & Calc I	8:00 - 8:50 AM	Mon. & Fri.	5.0 Credit Hours
PHYS 1410 & 1411	Gen. Physics I	8:00 - 9:10 AM	Mon. Wed. & Fri.	5.0 Credit Hours
PSYC 1810	Intro to Psychology	8:00 - 8:50 AM	Mon. Wed. & Fri.	3.0 Credit Hours
SPCH 1110	Public Speaking	9:00 - 9:50 AM	Tues. & Thur.	3.0 Credit Hours
MEDT 1010	Fund. of Phlebotomy	8:00 - 10:00 AM	Thursday	2.0 Credit Hours

SPRING: JANUARY-MAY

ACCT 1210	Accounting II	8:00 - 9:15 AM	Tues. Thur. Hybrid	3.0 Credit Hours
BSAD 1100	Personal Finance	8:30 - 9:45 AM	Mon. & Wed.	4.0 Credit Hours
BSAD 1050	Intro to Business	8:00 - 8:50 AM	Tues. Thur. Hybrid	3.0 Credit Hours
BSAD 2250	Business Communication	8:00 - 8:50 AM	Mon. Wed. & Fri.	3.0 Credit Hours
CHEM 1100 & 1101	Gen. Chemistry II	8:00 - 8:50 AM	Mon. & Fri.	4.0 Credit Hours
ENGL 1020	English Comp. II	8:00 - 8:50 AM	Mon. Wed. & Fri.	3.0 Credit Hours
MATH 1600	Analytic Geom. & Calc I	8:00 - 8:50 AM	Mon. & Fri.	5.0 Credit Hours
MATH 1900	Analytic Geom. & Calc II	8:00 - 8:50 AM	Mon. Wed. & Fri.	5.0 Credit Hours
PHYS 1420 & 1421	Elementary Gen. Physics II	8:00 - 9:10 AM	Mon. Wed. & Fri.	5.0 Credit Hours
PSYC 1810	Intro to Psychology	8:00 - 8:50 AM	Mon. Wed. & Fri.	3.0 Credit Hours
SPCH 1110	Public Speaking	8:00 - 8:50 AM	Mon. Wed. & Fri.	3.0 Credit Hours

*All courses can be requested for Distance Learning (DL). Courses are subject to change.

*All courses are on the NPCC South Campus.

TUITION & FEES

Tuition, fees and refund rates are set by the Mid-Plains Board of Governors. Rates become effective at the start of the fall term each year. Rates are subject to change without notice.



CLASSES
START AT
\$50

**PER
CREDIT
HOUR**

A THREE CREDIT
HOUR COURSE IS

\$150

WHEN A STUDENT EARNS 12 CREDIT HOURS OR MORE ATTENDING MPCC FULL-TIME, STUDENTS CAN ADVANCE 1 TIER *ON THE GRID BELOW.*

SCHOLARSHIP CRITERIA RANGES

H.S. GPA	or	ACT SCORE	% OF TUITION COVERED BY SCHOLARSHIP
3.8+		25+	Presidential Scholarship 100%
3.5-3.79		23-24	Vice Presidential Scholarship 75%
3.25-3.49		21-22	Dean's Scholarship 50%

Must complete Scholarship Application online by March 1
to be **eligible to advance one tier.**



12 CREDIT HOURS COMPLETED = STUDENT EARNS **BLUE & GOLD** CORD AT GRADUATION

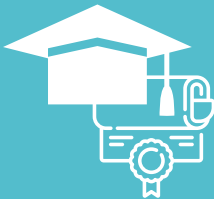


ACCESS COLLEGE EARLY (ACE) SCHOLARSHIP PROGRAM: FINANCIAL ASSISTANCE FOR UNLIMITED EARLY ENTRY COURSES

Access College Early (ACE) Scholarship Program pays tuition and fees for qualified, low-income high school students to enroll in college courses. To qualify for the scholarship, the *student must be enrolled in an eligible course* taken for a grade (Courses taken as audit or as CR/NC are not eligible.)

If students meet one of these qualifications please contact your high school's counselor for additional assistance.

- Free or Reduced-Price Lunch Program
- Supplemental Security Income
- Temporary Assistance to Needy Families (TANF)
- Supplemental Nutrition Assistance Program (SNAP)
- Special Supplemental Assistance Program (WIC)



ACE Scholarship Application:
<https://ecmp.nebraska.gov/CCPE-ACE/Account/Login>

HOW TO **APPLY**

STEP

1

HOW TO APPLY

1. Go to www.mpcc.edu. Choose **Apply Now**.
2. Then select **Next Page**.
3. Select **Submit**.
4. A confirmation page will appear.
5. Complete the **Parent Signature Form**.
6. Complete the **FERPA Release Form**. (optional)
7. Complete **MPCC Scholarship Application**. (optional)
8. You will receive a **confirmation email**.

STEP

2

HOW TO ACCESS/CREATE YOUR EARLY ENTRY ACCOUNT

1. Go to www.mpcc.edu.
2. Select the **My Campus Web** icon.
3. Enter MPCC email address.
Example: jdoe000@students.mpcc.edu.
4. Enter password.

*Your first login password will be your birthday in the following format:
MonthDDYYYY*

Example: For a birthdate of May 15, 2007, the password would be May152007.

5. Click **Sign In**.

STEP

3

HOW TO REGISTER ONLINE (EACH SEMESTER)

1. Log into **CampusWeb**.
2. Select **Registration**, under Student tab.
3. Enter information for the course(s) you're looking for, then click **Search**.
4. Click on the **Add This Course**.



FIND YOUR

CAMPUS & CONTACT

NORTH PLATTE CAMPUS



YOUR CONTACT

Kayla Thurman

DIRECTOR OF EARLY ENTRY & PROGRAM DEVELOPMENT
1101 Halligan Drive, North Platte, NE 69101

Phone: 308.535.3607 Email: earlyentry@mpcc.edu

Suzanne Ramsey

EARLY ENTRY COORDINATOR
1101 Halligan Drive, North Platte, NE 69101

Phone: 308.535.3639 Email: earlyentry@mpcc.edu

Stormi Barkley

EARLY ENTRY ADMINISTRATIVE ASSISTANT
601 W State Farm Road, North Platte, NE 69101

Email: earlyentry@mpcc.edu

MCCOOK CAMPUS



YOUR CONTACT

Erin Sis

AREA RECRUITER
1205 East Third Street, McCook, NE 69001

Phone: 308.344.8023 Email: sise@mpcc.edu

IMPERIAL CAMPUS



YOUR CONTACT

Brenda Ledall

IMPERIAL CAMPUS ADMINISTRATOR
1324 Broadway, PO BOX 148, Imperial, NE 69033

Phone: 308.882.5972 Email: ledallb@mpcc.edu

OGALLALA CAMPUS



YOUR CONTACT

Mary Pierce

OGALLALA CAMPUS ADMINISTRATOR

512 East B. Street South, Ogallala, NE, 69153

Phone: 308.284.9830 Email: piercem@mpcc.edu

BROKEN BOW CAMPUS



YOUR CONTACT

Kaci Johnson

BROKEN BOW CAMPUS ADMINISTRATOR

2520 S. E Street, Broken Bow, NE 68822

Phone: 308.872.5259 Email: johnsonkj@mpcc.edu

VALENTINE CAMPUS



YOUR CONTACT

Jennifer Edson

VALENTINE CAMPUS ADMINISTRATOR

715 E Hwy 20, Valentine, NE 69201

Phone: 402.376.8033 Email: edsonj@mpcc.edu

MID-PLAINS COMMUNITY COLLEGE

1101 HALLIGAN DRIVE
NORTH PLATTE NE 69101

WWW.MPCC.EDU

NON-PROFIT ORG
US POSTAGE
PAID
MIDWEST CONNECT



Mid-Plains Community College does not discriminate based upon any protected status.
Please see <http://www.mpcc.edu/about/non-discrimination-policy.php>